



BASKETBALL
NEDERLAND

PILOT 2PO MECHANICS UPDATE





WHY?

TO BRING 2PO MECHANICS MORE IN LINE WITH 3PO PRINCIPLES



WHERE?

STARTING SEASON 2024-2025:

SECOND DIVISION MEN (MANNEN PROMOTIEDIVISIE)

FIRST DIVISION MU19 (MANNEN U19 EREDIVISIE)



WHAT?

**LEAD AND TRAIL OFFICIALS
OFFICIATE WITHOUT THE
'PREFERRED DIAGONAL'**

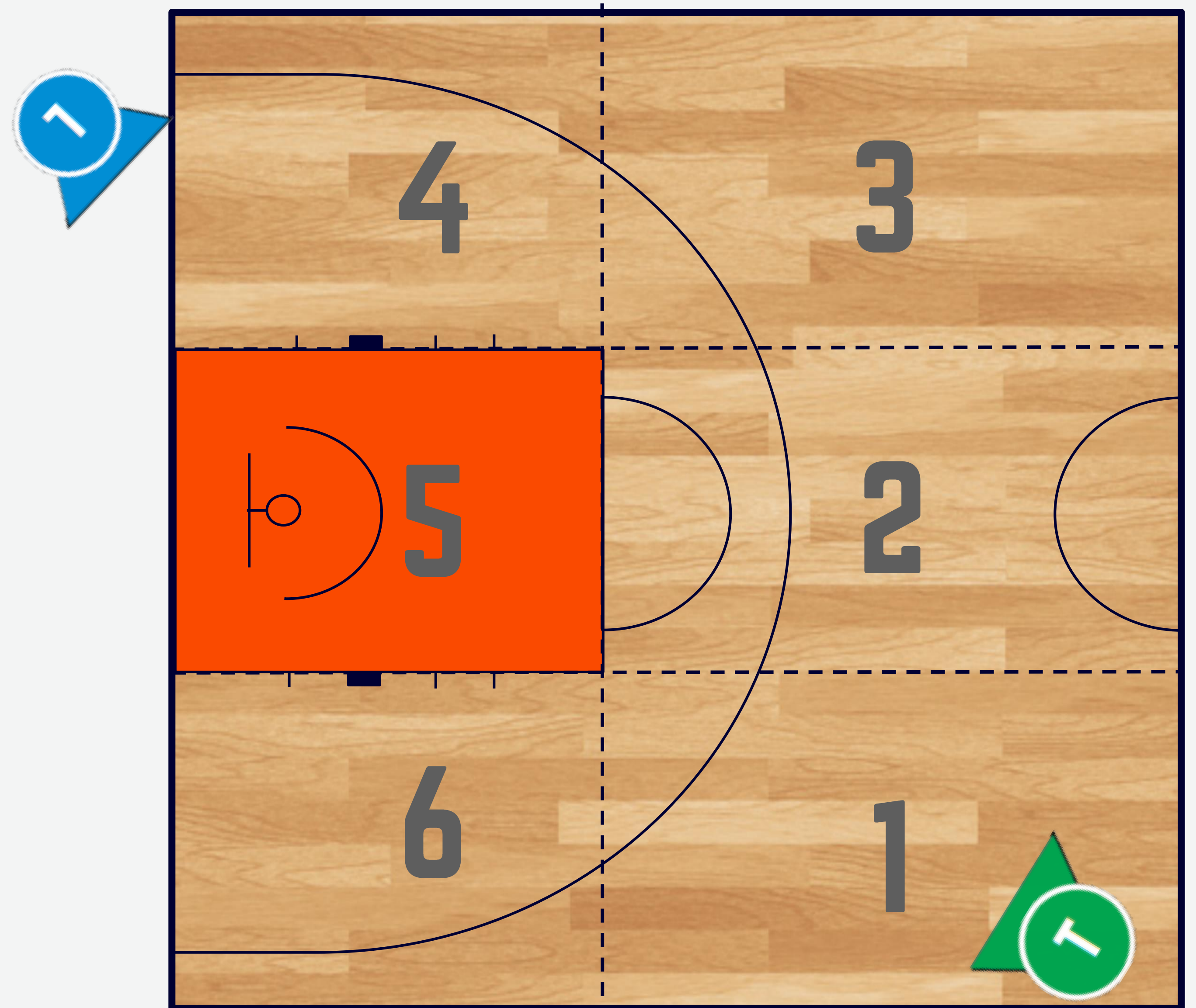
**THE TRAIL OFFICIAL IS
POSITIONED OPPOSITE SIDE
FROM THE SCORER'S TABLE
(FACING THE SCORER'S
TABLE) FOR ALL FREE
THROWS.**

**POSITIONING OF THE
OFFICIALS IS DETERMINED
BY THE LOCATION OF THE
BALL COMING INTO PLAY.
TRAIL AND LEAD OFFICIATE
ON EITHER THE LEFT OR
RIGHT SIDE OF THE COURT
DEPENDING ON PLAY.**



RECTANGLES

EACH HALF COURT HAS BEEN DIVIDED INTO SIX (6) RECTANGLES TO PROVIDE A FRAMEWORK OF REFERENCE IN DISCUSSING COVERAGE.

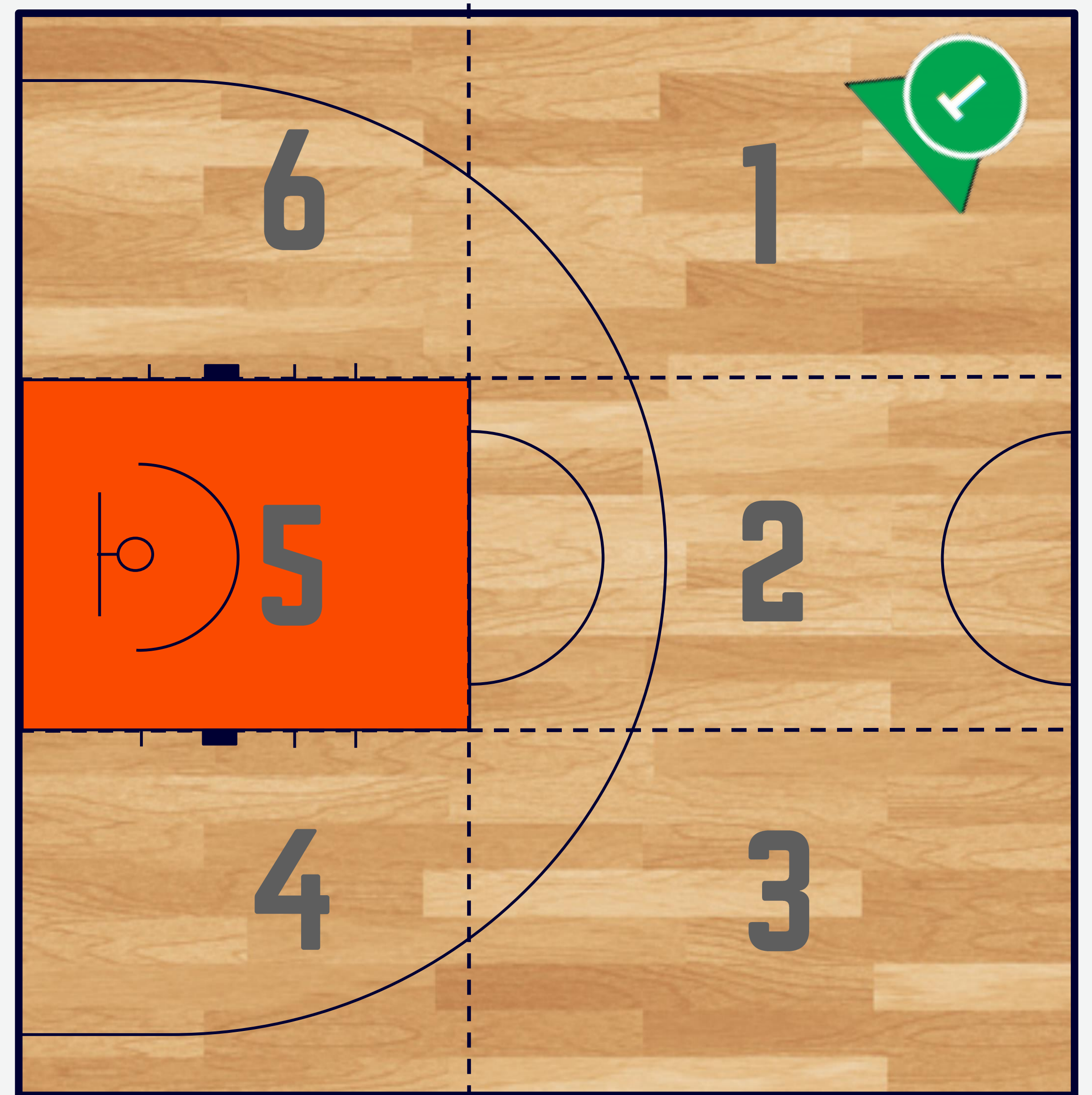


RECTANGLES (NEW)

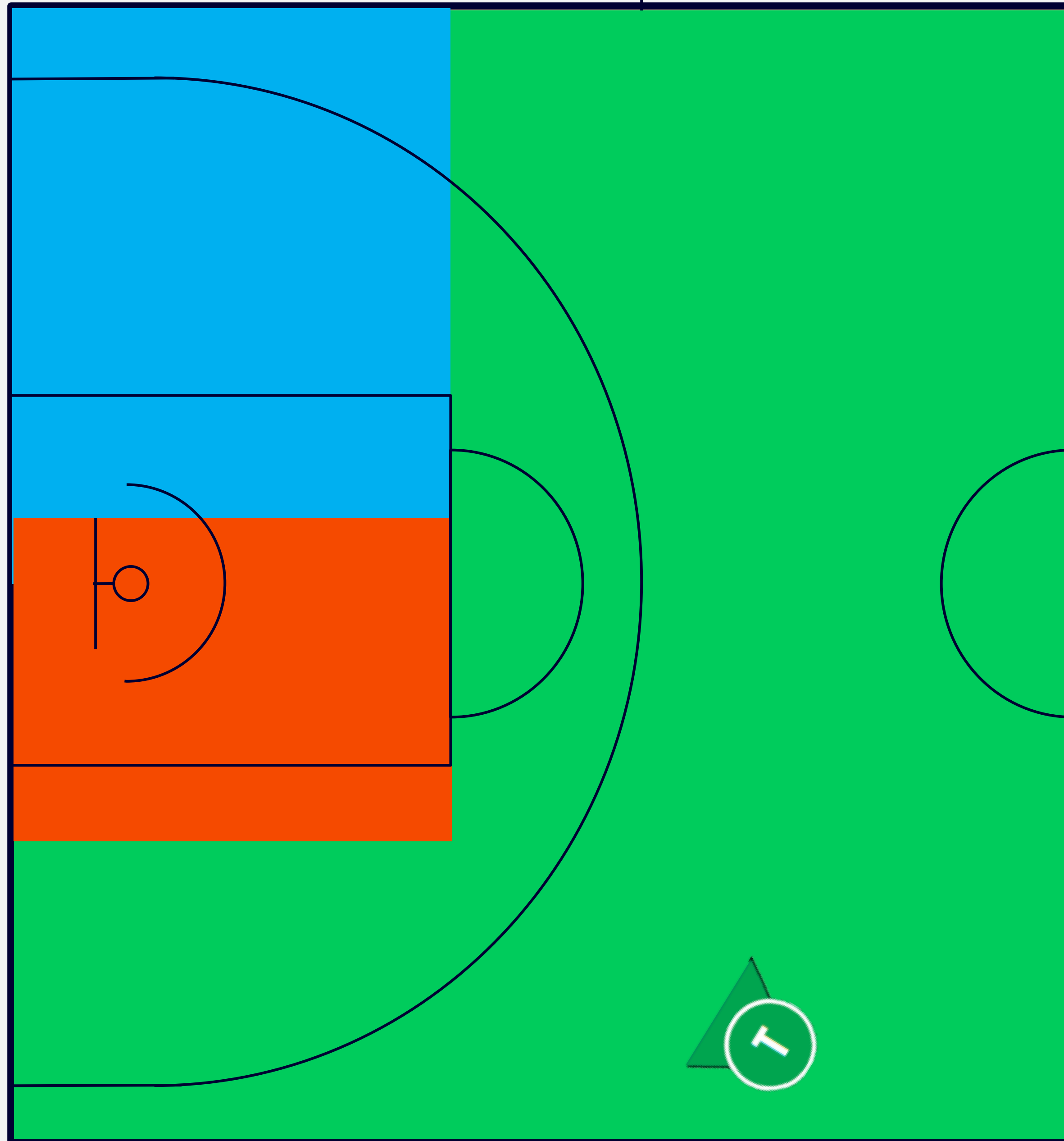
LEAD AND TRAIL CAN BE ON
EITHER SIDE OF COURT

(NO 'WORK LEFT' MECHANIC)

OFFICIALS APPLY 'BOXING IN'
PRINCIPLES



COVERAGE



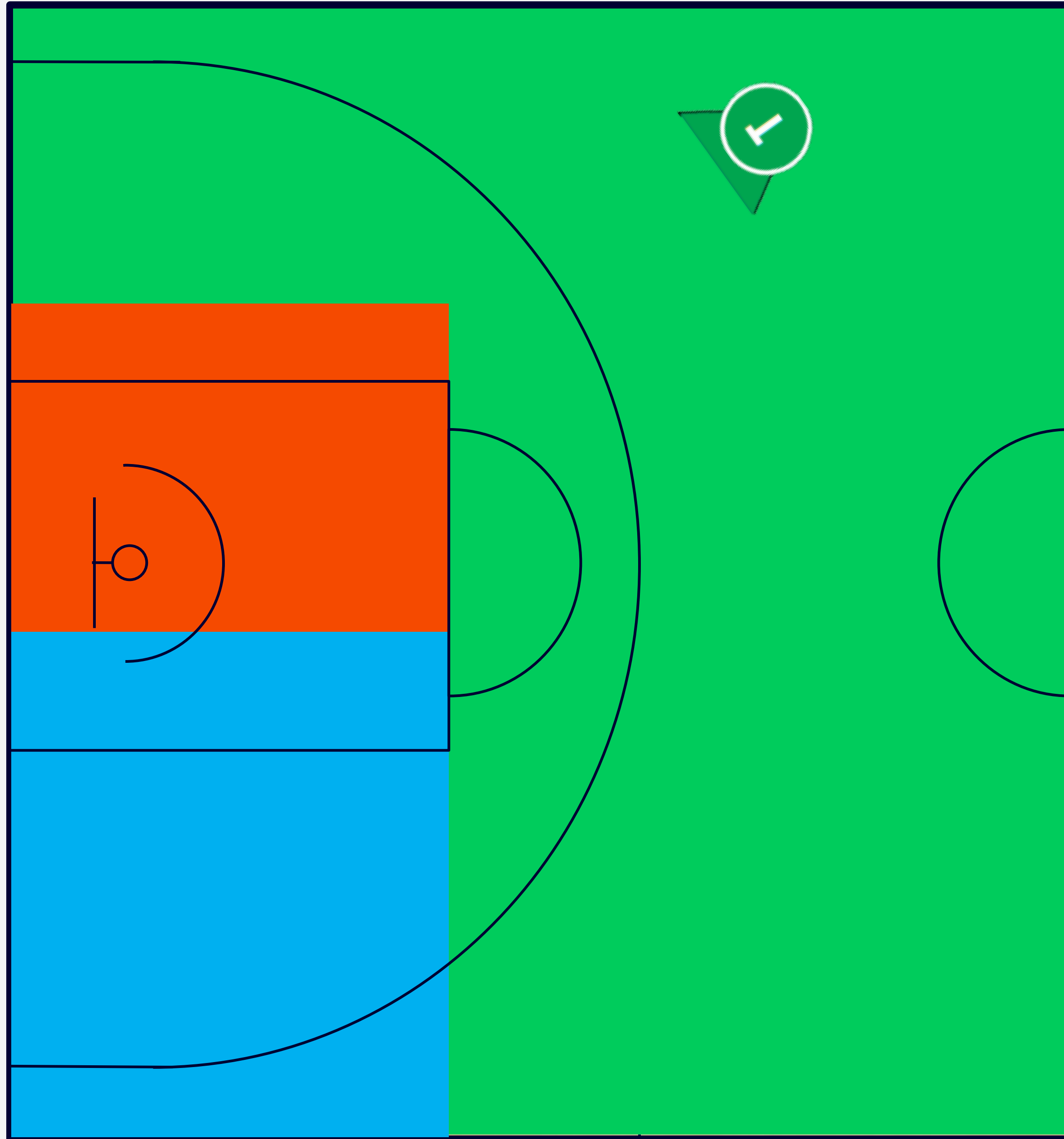
RESPONSIBLE
FOR THE BALL

LEAD

TRAIL

BEIDE

COVERAGE



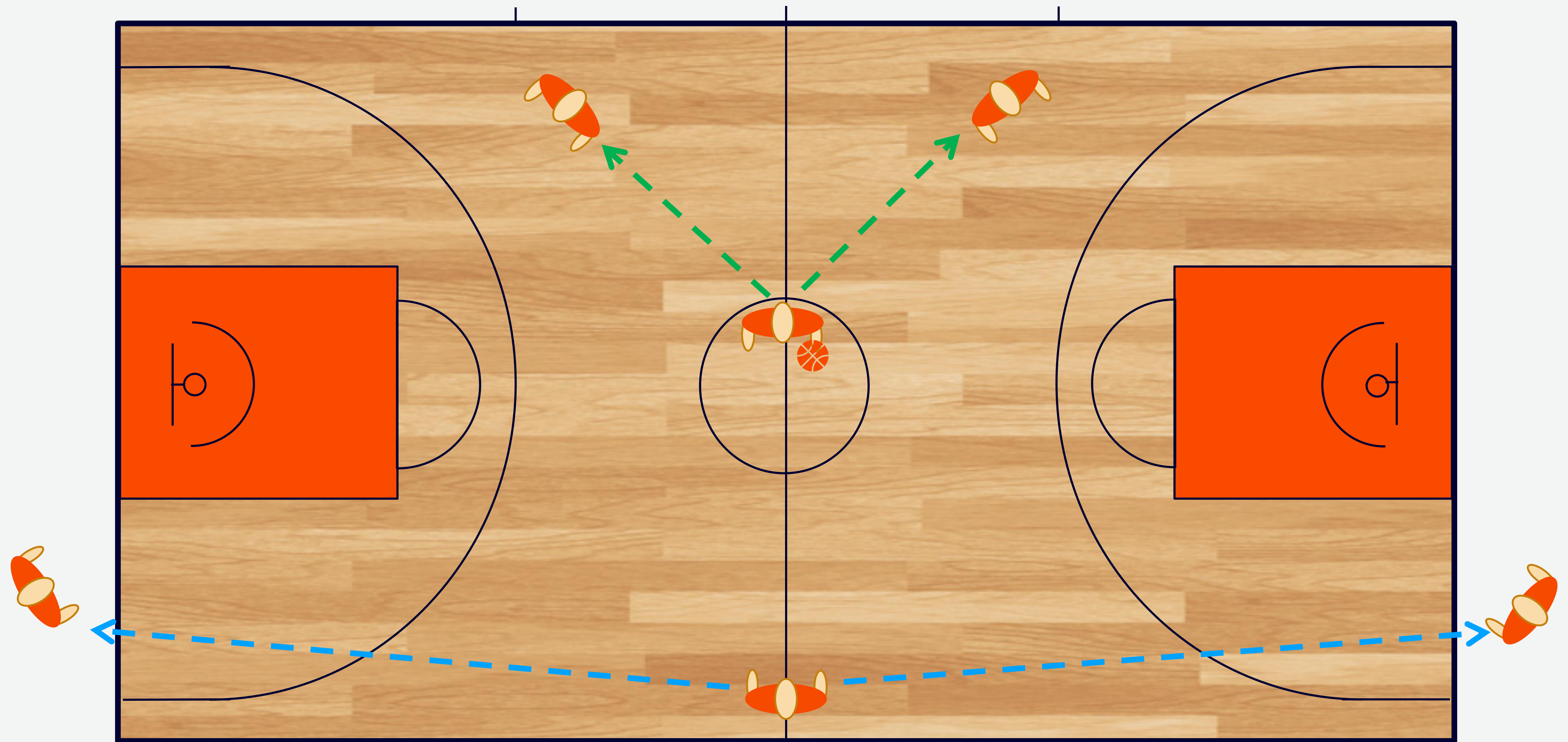
RESPONSIBLE
FOR THE BALL

LEAD

TRAIL

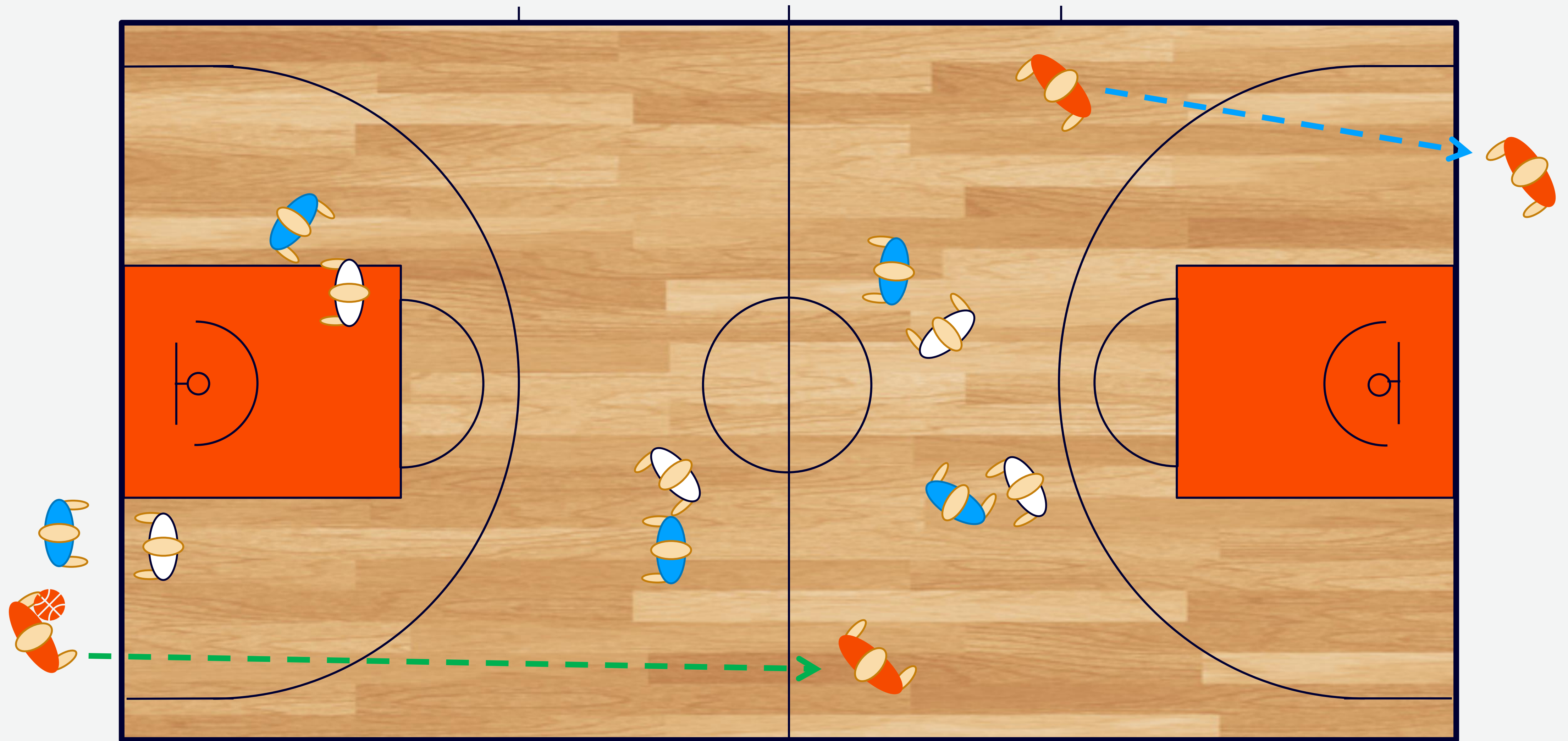
BEIDE

START OF THE GAME



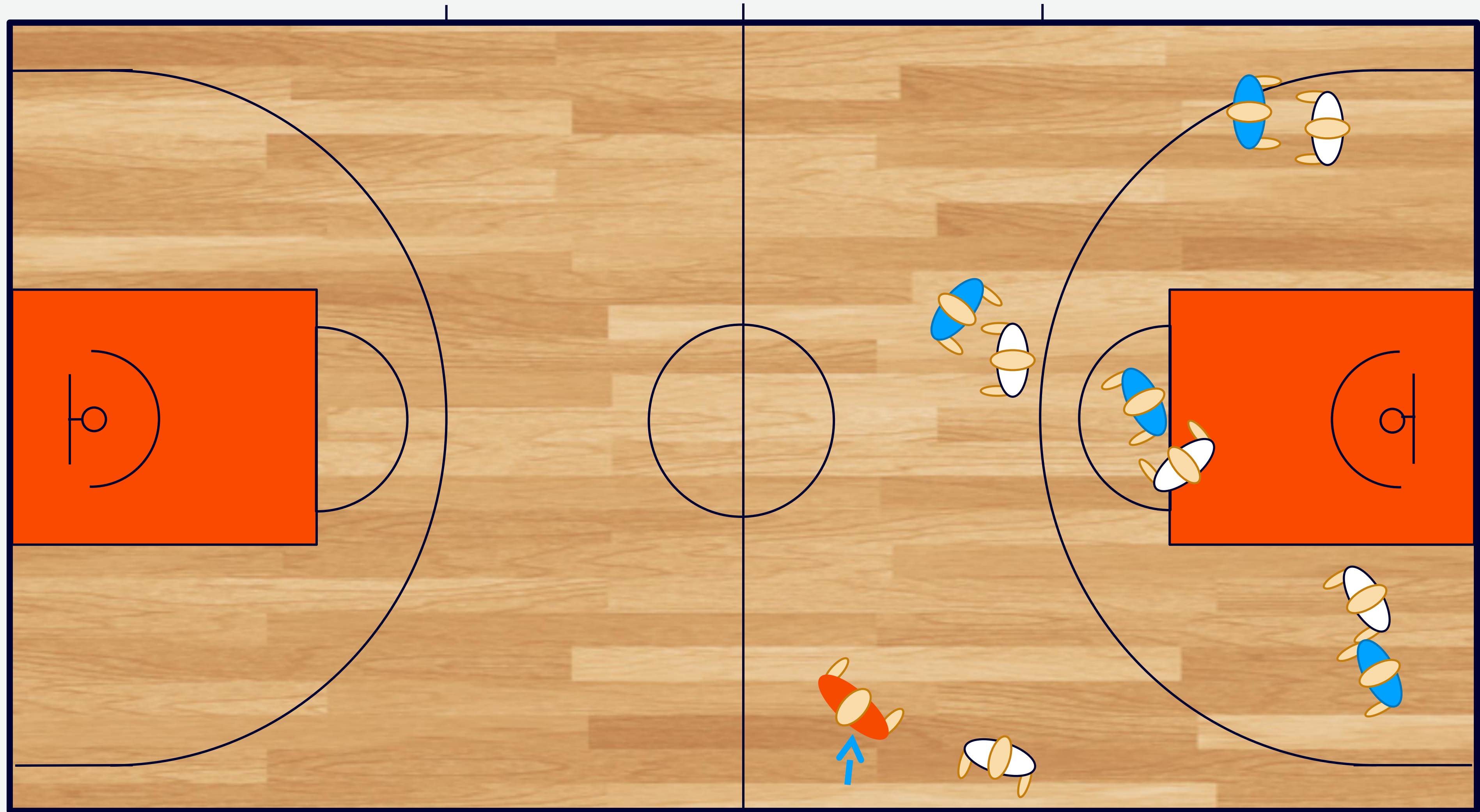
Scorer's table

THROW-IN



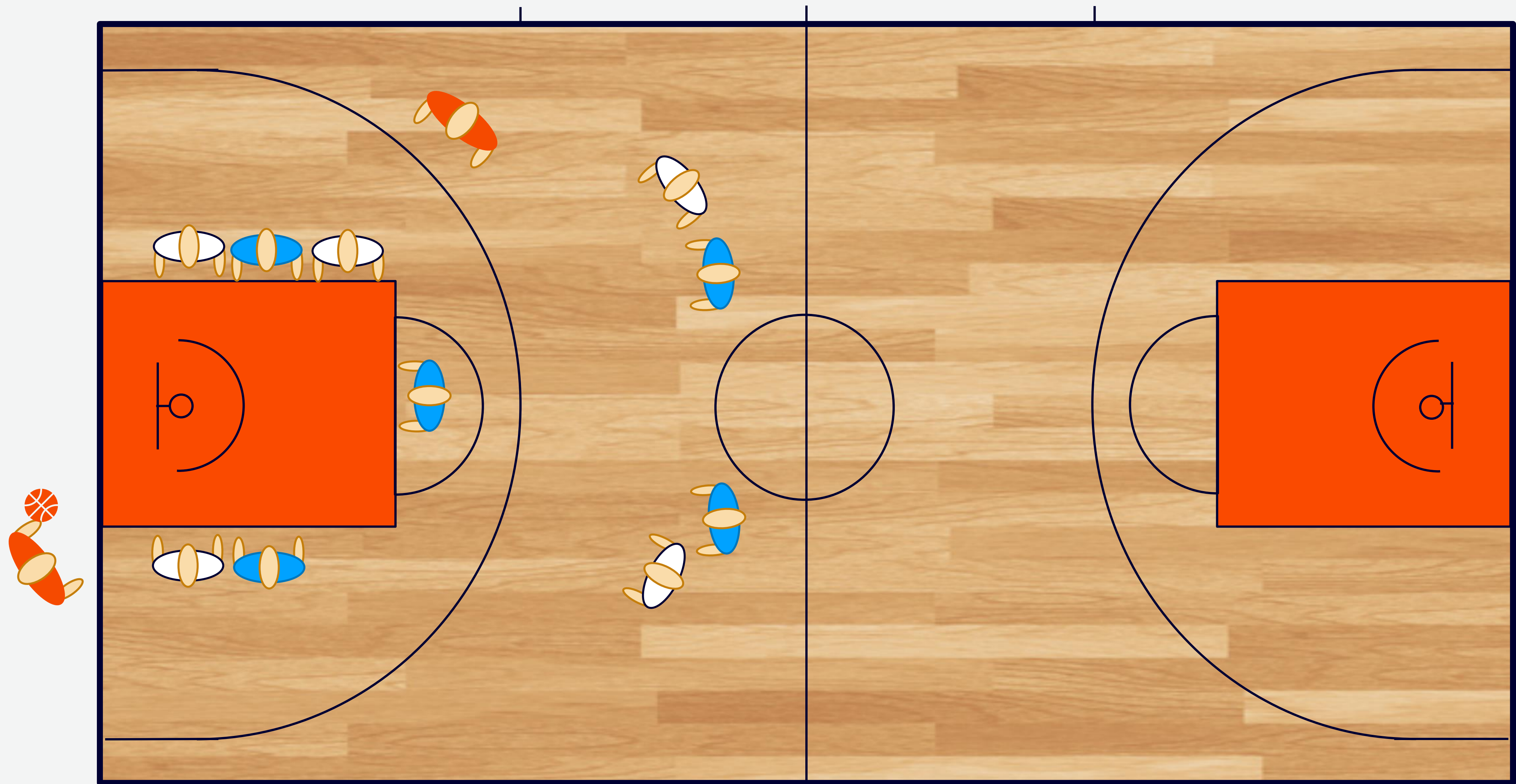
Scorer's table

THROW-IN



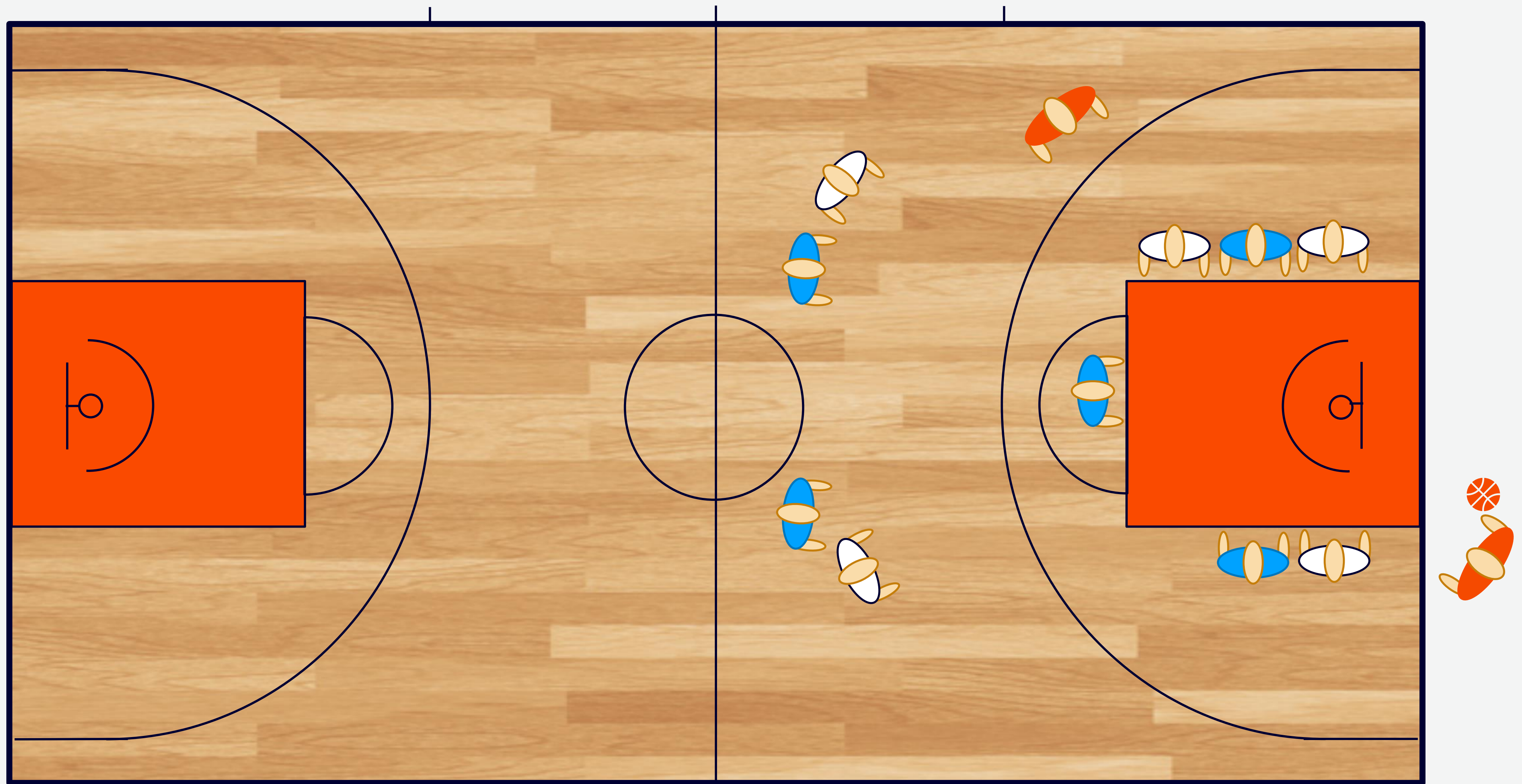
Scorer's table

FREE THROWS



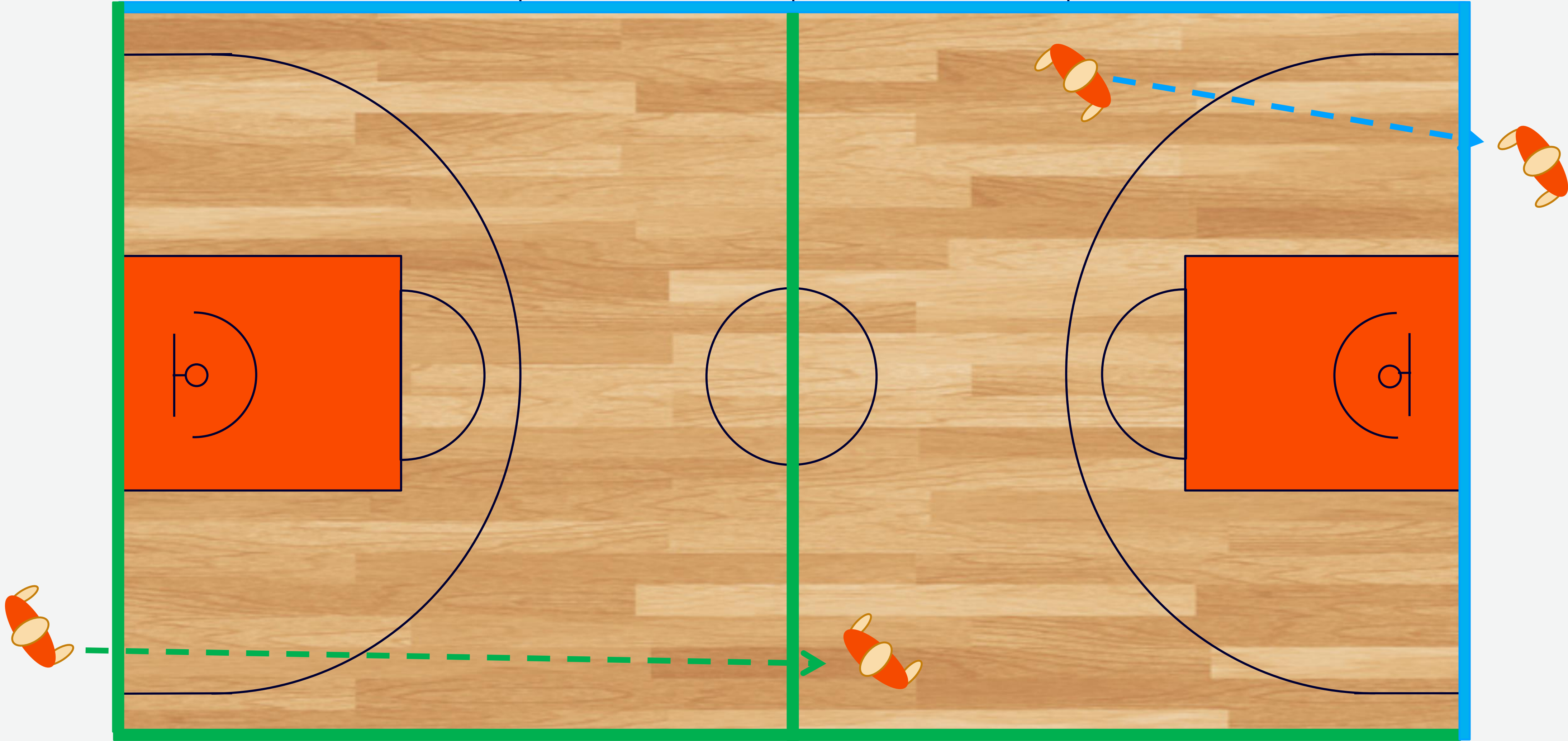
Scorer's table

FREE THROWS



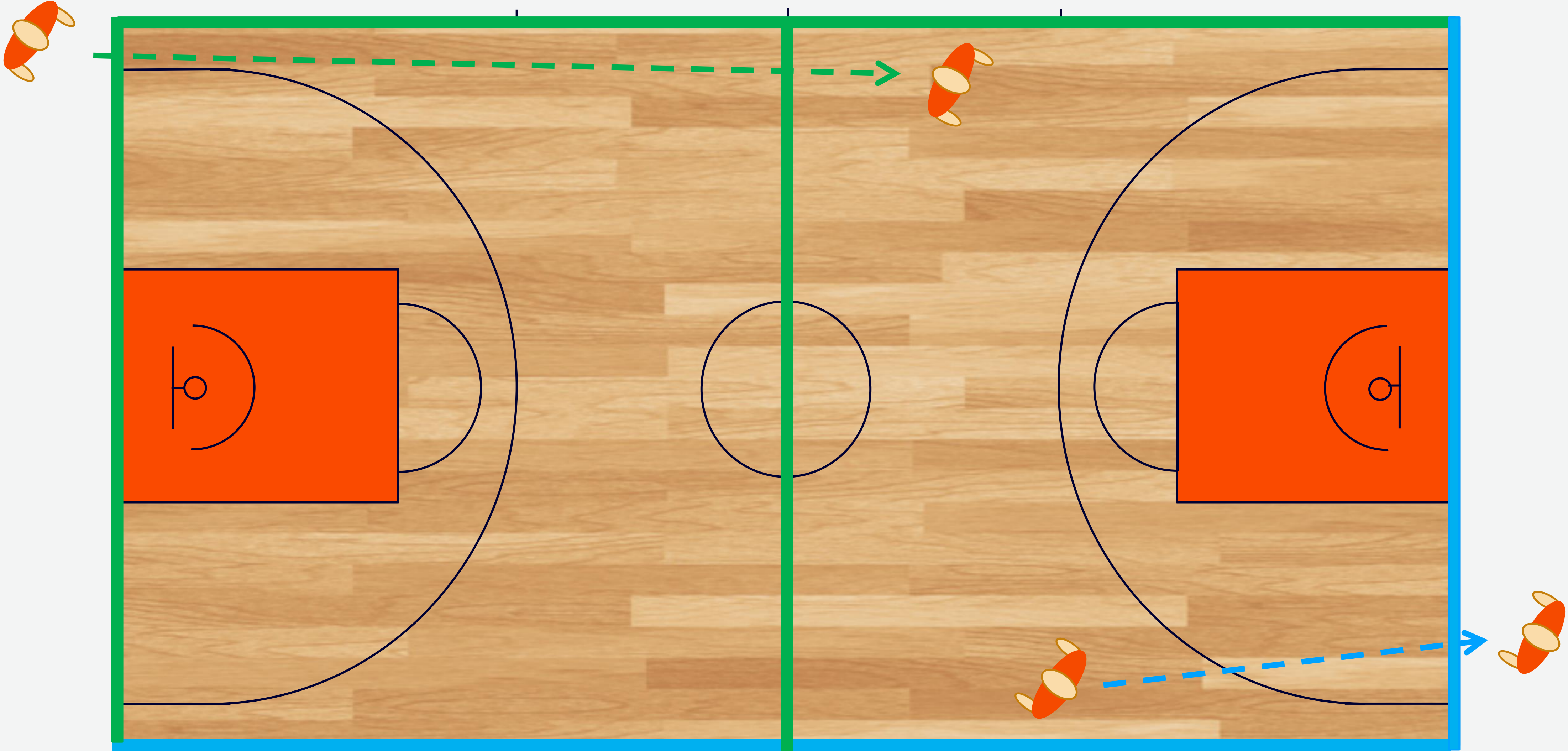
Scorer's table

LINE RESPONSIBILITIES



Scorer's table

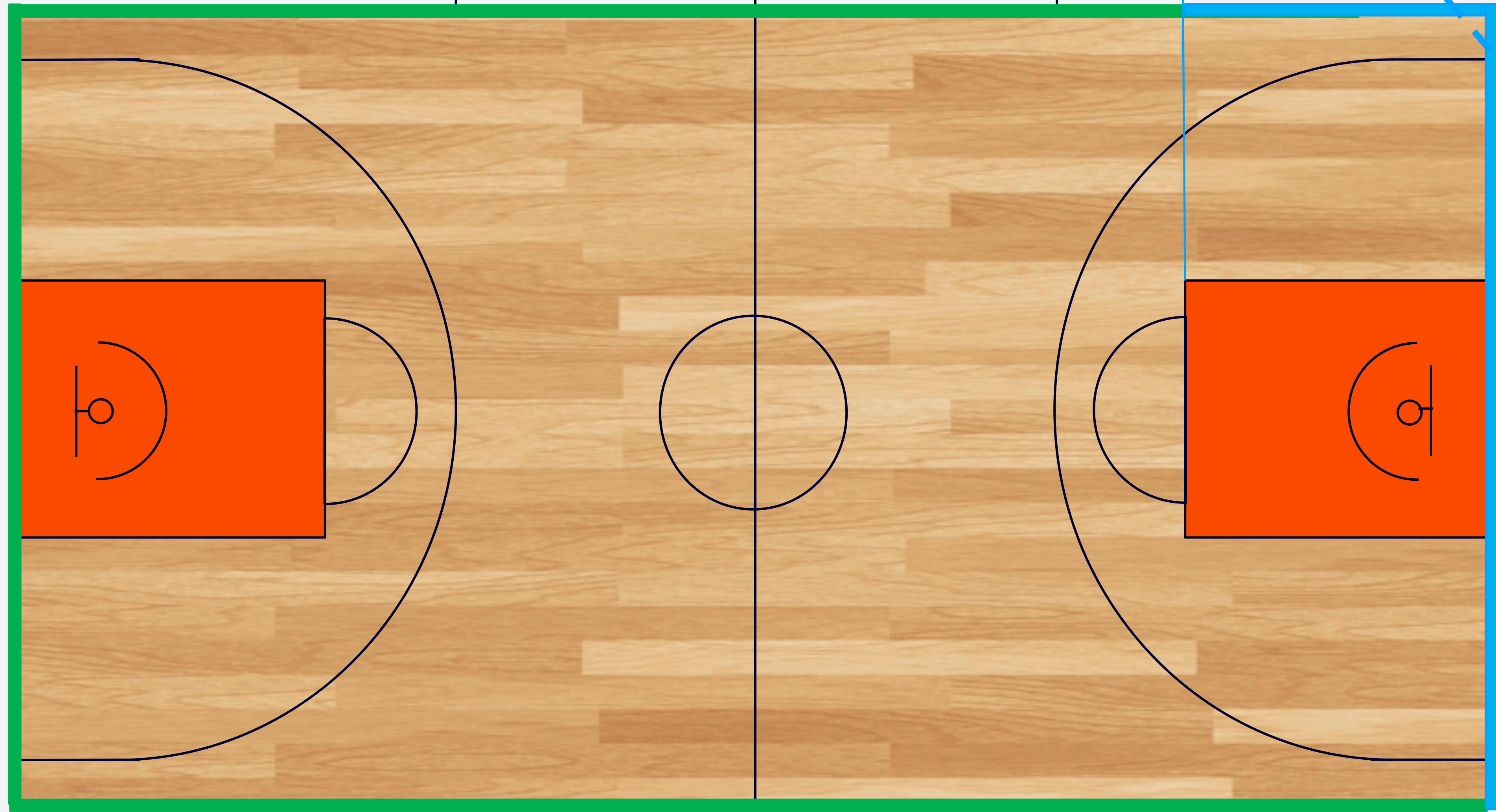
LINE RESPONSIBILITIES



Scorer's table

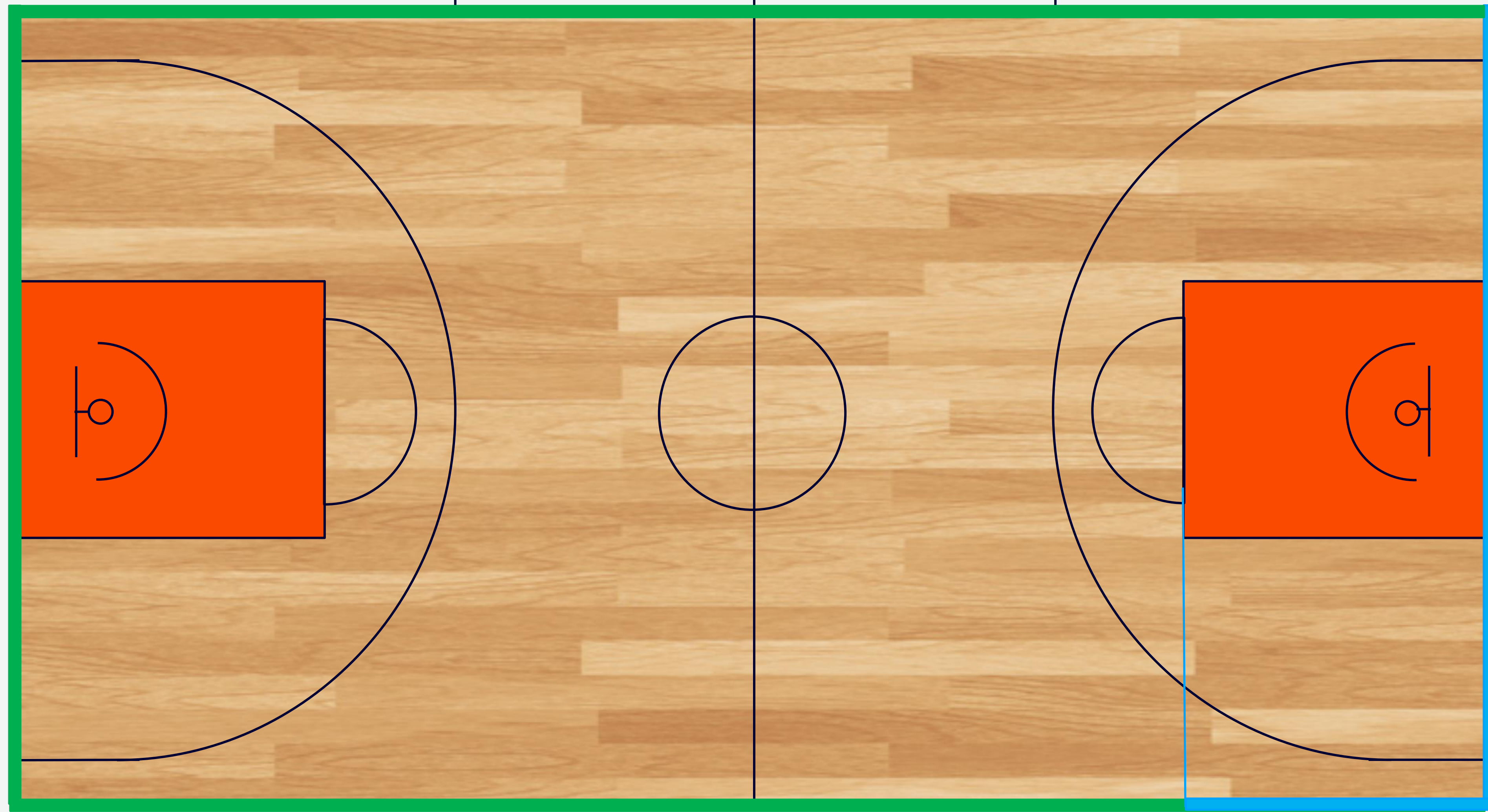
THROW-IN RESPONSIBILITIES

LEAD Hands ball or bounce up sideline



Scorer's table

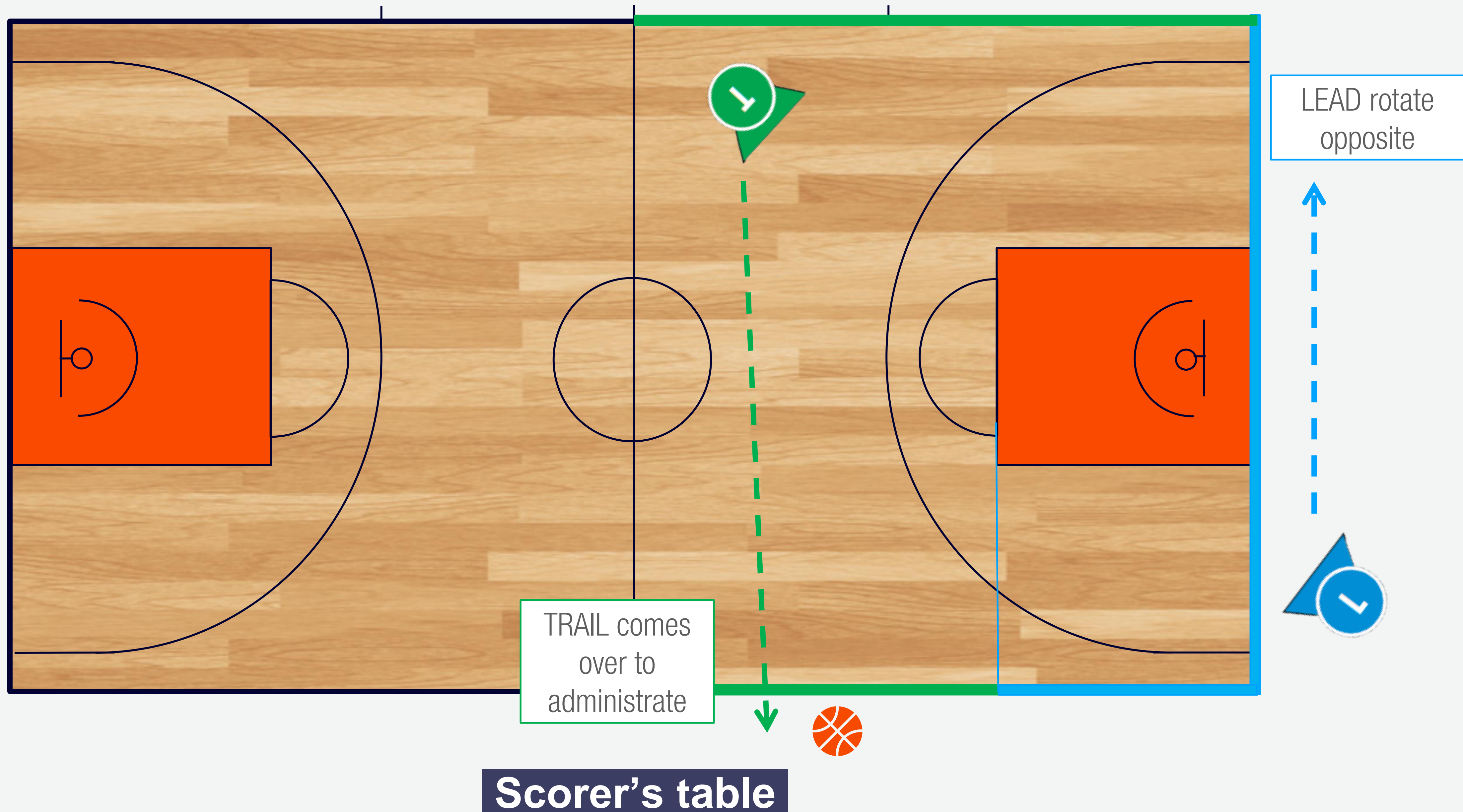
THROW-IN RESPONSIBILITIES



LEAD Hands ball or bounce
up sideline

Scorer's table

THROW-IN RESPONSIBILITIES





14 14



Q4

6:23



LOK

58 | 44

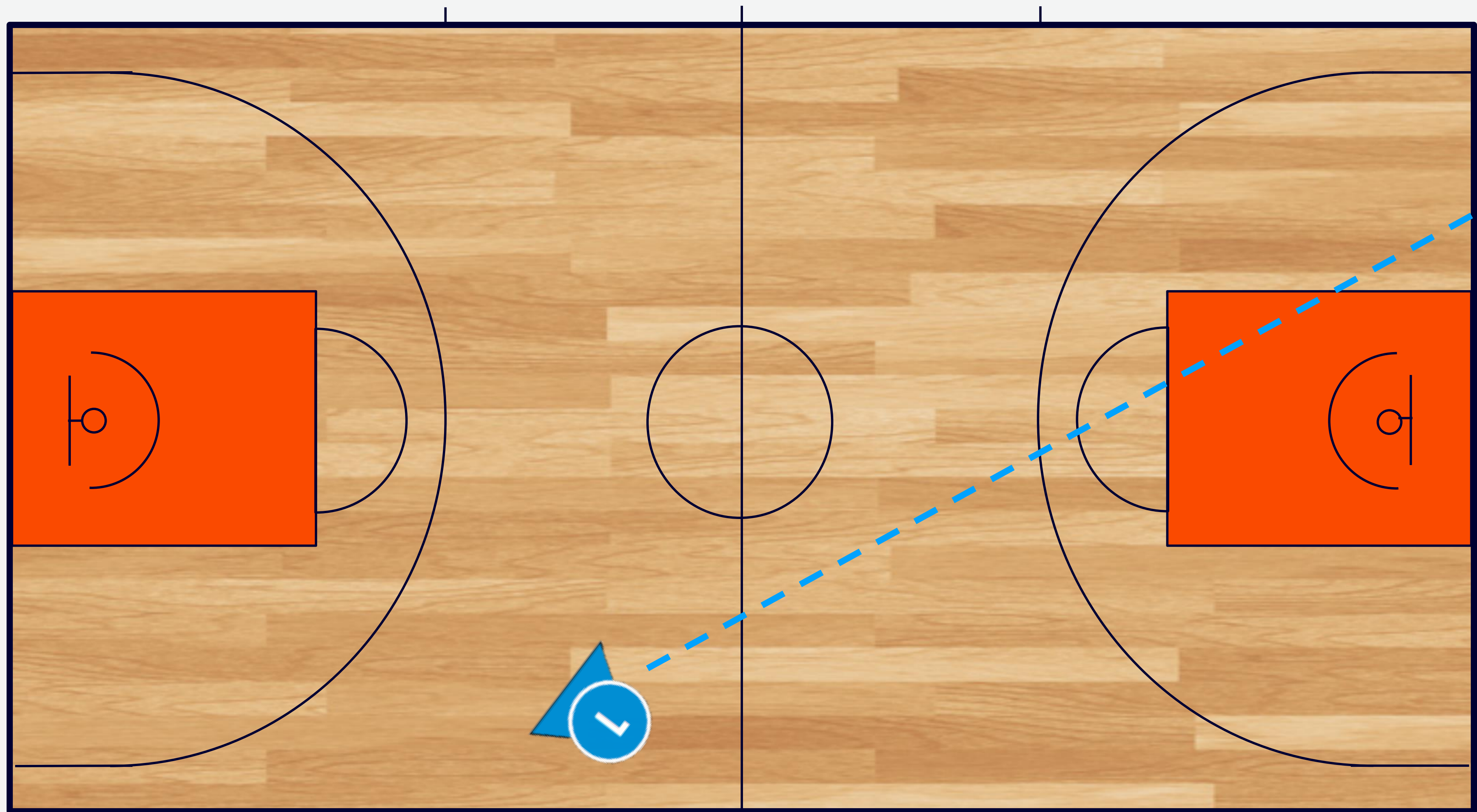
ZZL



READY TO ROAR 2

4 THE FINALS '24

THROW-IN RESPONSIBILITIES



Scorer's table

DISTANCE & STATIONARY

- **DISTANCE**
 - PROPER DISTANCE = 3-6 METERS
 - LESS EMOTIONAL CALLS
 - MAINTAIN PERSPECTIVE
 - MAINTAIN WIDE ANGLE (=MORE PLAYERS)
 - SEE BIG PICTURE (NEXT PLAY, CLOCKS, PARTNERS)
- **STATIONARY**
 - BETTER VISION
 - HIGHER CONCENTRATION

45 AND OPEN ANGLE

- HAVE THE KEY PLAYERS (1-1) OR AS MANY PLAYERS AS POSSIBLE IN YOUR FIELD OF VISION IN ORDER TO SEE ANY ILLEGAL ACTION.

BASICS

IOT REMAINS THE SAME

REFEREE THE DEFENSE

- FOCUS YOUR ATTENTION ON THE ILLEGALITY OF THE DEFENSIVE PLAYER
- BUT, KEEP THE BALL HANDLER IN YOUR FIELD OF VISION (MISSED TRAVEL VIOLATIONS DETERMINE PIVOT FOOT FIRST)
- FIND A POSITION WHERE YOU SEE THE SPACE BETWEEN THE PLAYERS IN ORDER TO REFEREE THE DEFENSE

STAY WITH THE PLAY

- 'STAY WITH THE PLAY UNTIL THE END OF THE ACTION'
- PHYSICALLY: DO NOT START TO MOVE (E.G. T/C STEPPING BACKWARDS ON A SHOT)
- MENTALLY: FOCUS ON DEFENDER UNTIL THE PLAY HAS ENDED (E.G. SHOOTER HAD LANDED)

ACTIVE MINDSET

DISTANCE & STATIONARY

- **DISTANCE**
 - **PROPER DISTANCE = 3-6 METERS**
 - **LESS EMOTIONAL CALLS**
 - **MAINTAIN PERSPECTIVE**
 - **MAINTAIN WIDE ANGLE (=MORE PLAYERS)**
 - **SEE BIG PICTURE (NEXT PLAY, CLOCKS, PARTNERS)**

- **STATIONARY**
 - **BETTER VISION**
 - **HIGHER CONCENTRATION**

45 AND OPEN ANGLE

- **HAVE THE KEY PLAYERS (1-1) OR AS MANY PLAYERS AS POSSIBLE IN YOUR FIELD OF VISION IN ORDER TO SEE ANY ILLEGAL ACTION.**

REFEREE THE DEFENSE

- **FOCUS YOUR ATTENTION ON THE ILLEGALITY OF THE DEFENSIVE PLAYER**
- **BUT, KEEP THE BALL HANDLER IN YOUR FIELD OF VISION (MISSED TRAVEL VIOLATIONS DETERMINE PIVOT FOOT FIRST)**
- **FIND A POSITION WHERE YOU SEE THE SPACE BETWEEN THE PLAYERS IN ORDER TO REFEREE THE DEFENSE**

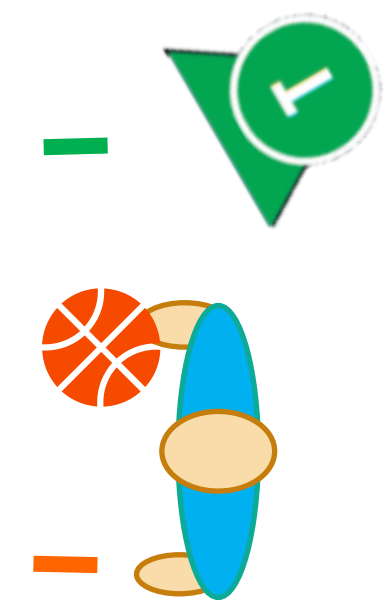
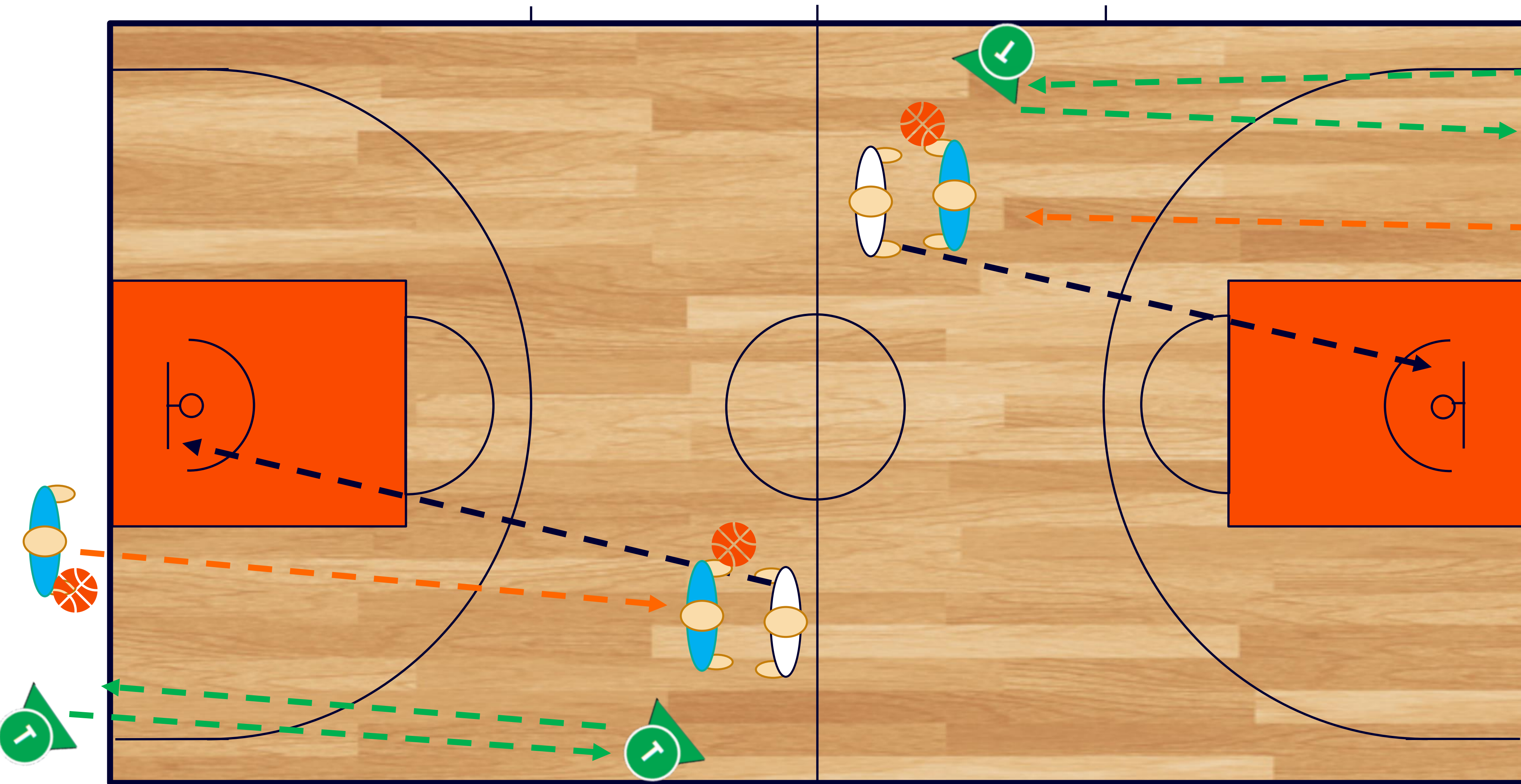
STAY WITH THE PLAY

- **'STAY WITH THE PLAY UNTIL THE END OF THE ACTION'**
- **PHYSICALLY: DO NOT START TO MOVE (E.G. T/C STEPPING BACKWARDS ON A SHOT)**
- **MENTALLY: FOCUS ON DEFENDER UNTIL THE PLAY HAS ENDED (E.G. SHOOTER HAD LANDED)**



BASKETBALL
NEDERLAND

EXCERCISE TRAIL

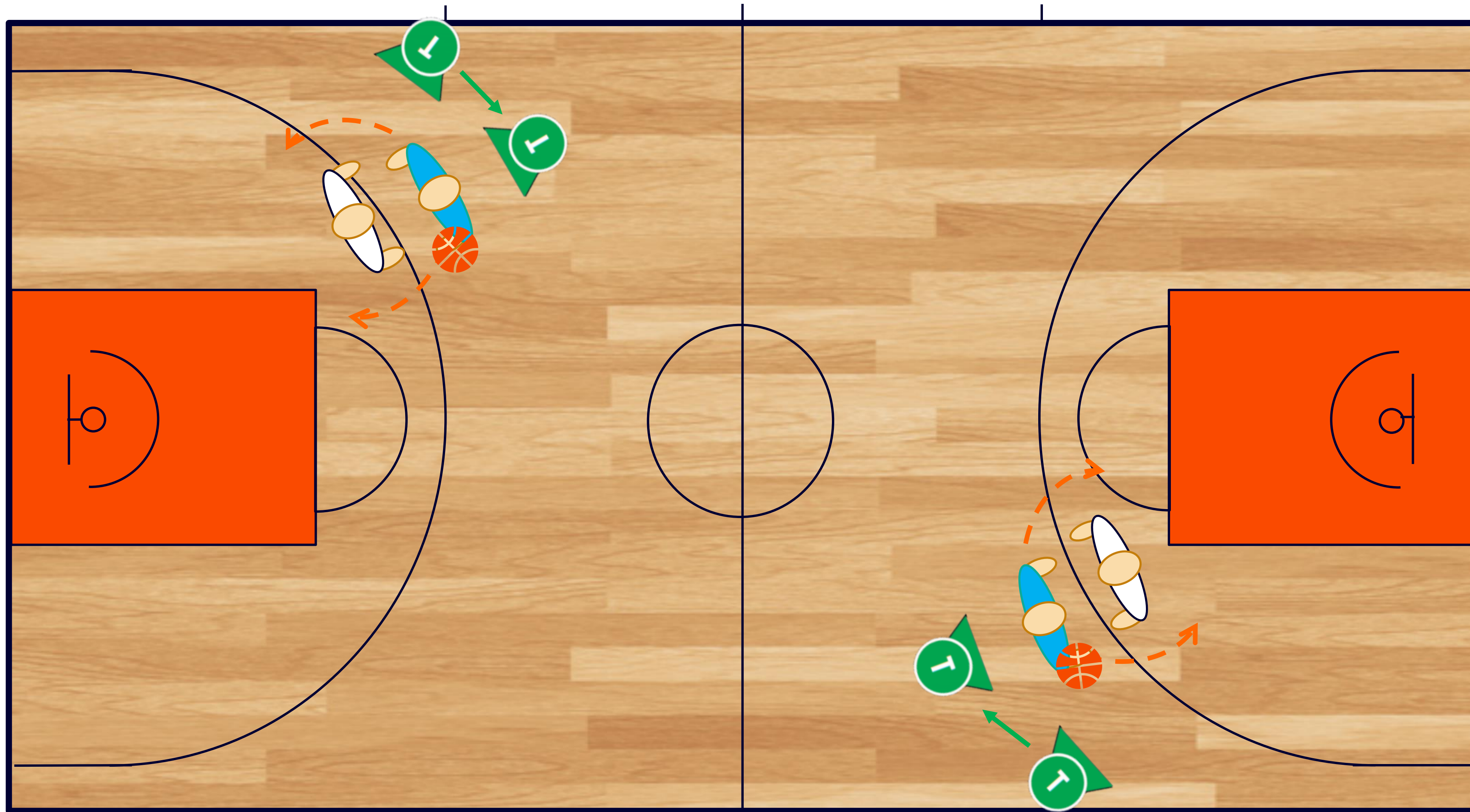


AN OFFENDER AND A DEFENDER.

THE BALL IS TAKEN AFTER A SCORE AND OFFENDER DRIBBLES.

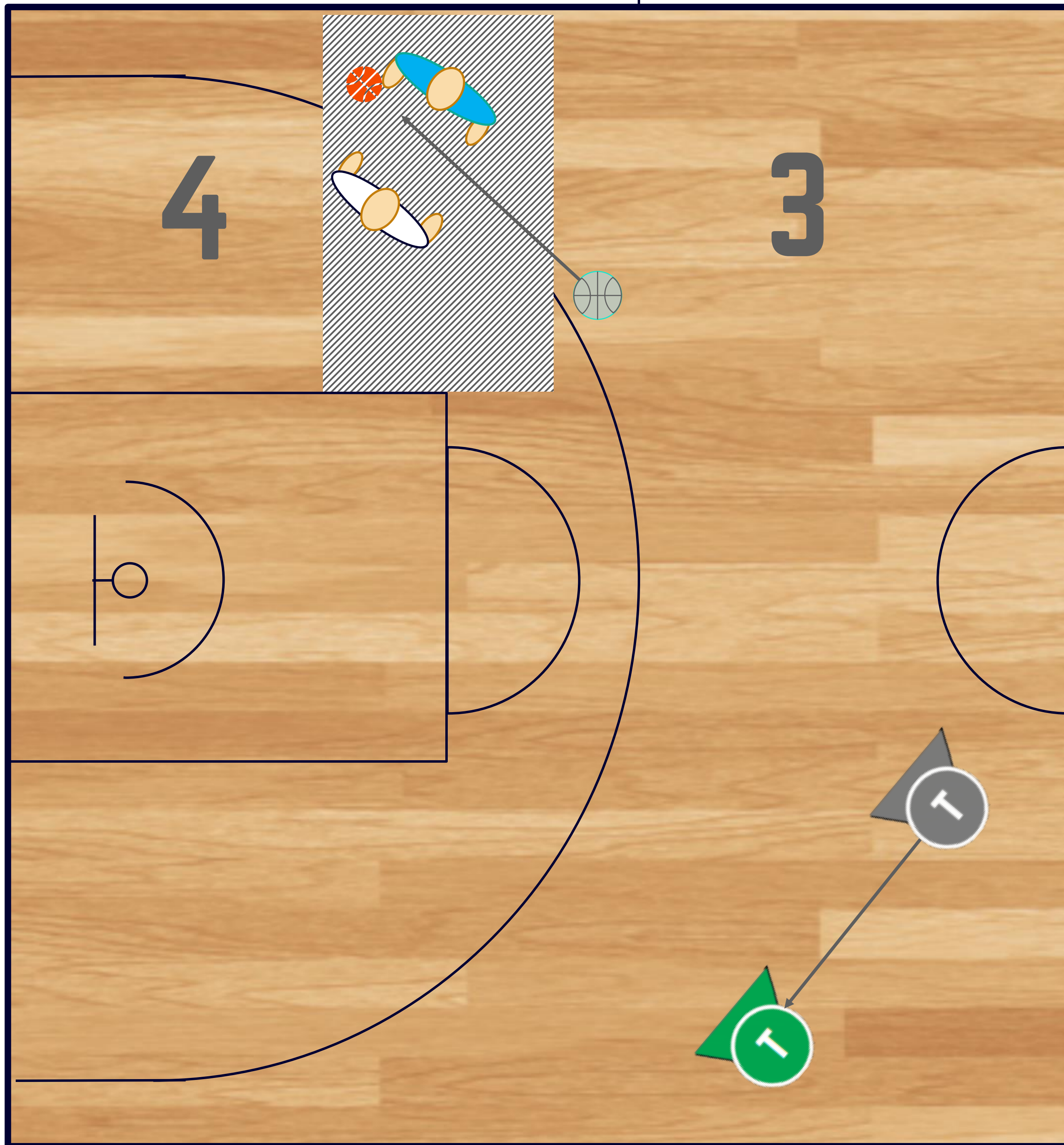
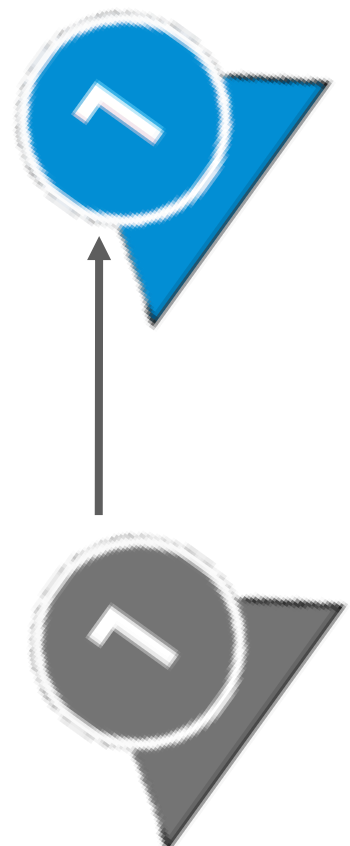
AT ONE POINT THE OFFENDER HANDS THE BALL TO THE OPPONENT WHO RUNS A FASTBREAK TO THE OTHER SIDE.

EXCERCISE CROSS STEP TRAIL



**AN OFFENDER AND
A DEFENDER.**

**THE OFFENDER
HAND THE BALL TO
THE DEFENDER WHO
PASS VIA THE LEFT
OR RIGHT AND THE
TRAIL REFEREE
MAKES A PROPER
CROSS STEP.**



TRANSITION BOX 3 TO BOX 4

BOX 3

**LEAD AWAY FROM THE BALL.
TRAIL ON AND AROUND THE
BALL.**

**IN SHADED AREA, AGREE IN
PREGAME WHO WILL TAKE
OVER AND WHEN.**

**IF LEAD TAKES OVER, TRAIL
MUST MOVE TO THE LEFT,
TOWARDS THE SIDELINE.**

POSTPLAY BOX 6

**WHEN DOES LEAD COME TO
BOX 6?**

**IN THE SHADED AREA, AGREE
IN PREGAME WHO WILL TAKE
OVER AND WHEN.**

**IF LEAD TAKES OVER, TRAIL
MUST CHECK WEAKSIDE**

