



BASKETBALL NEDERLAND



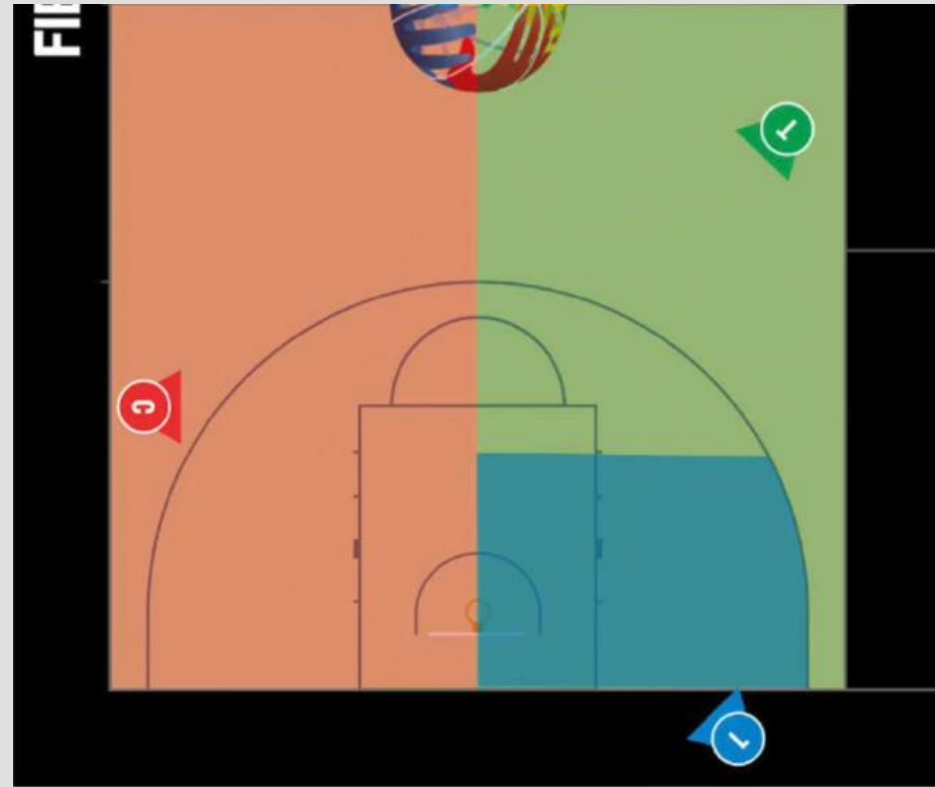
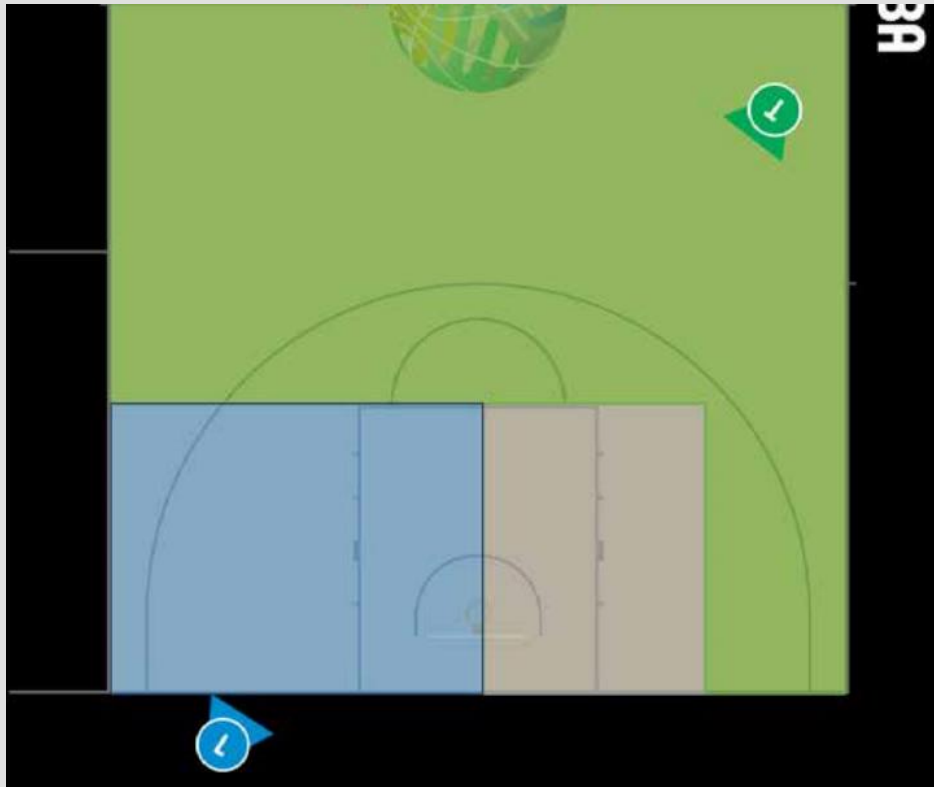
BASIC COVERAGE



MAKE A DRAWING

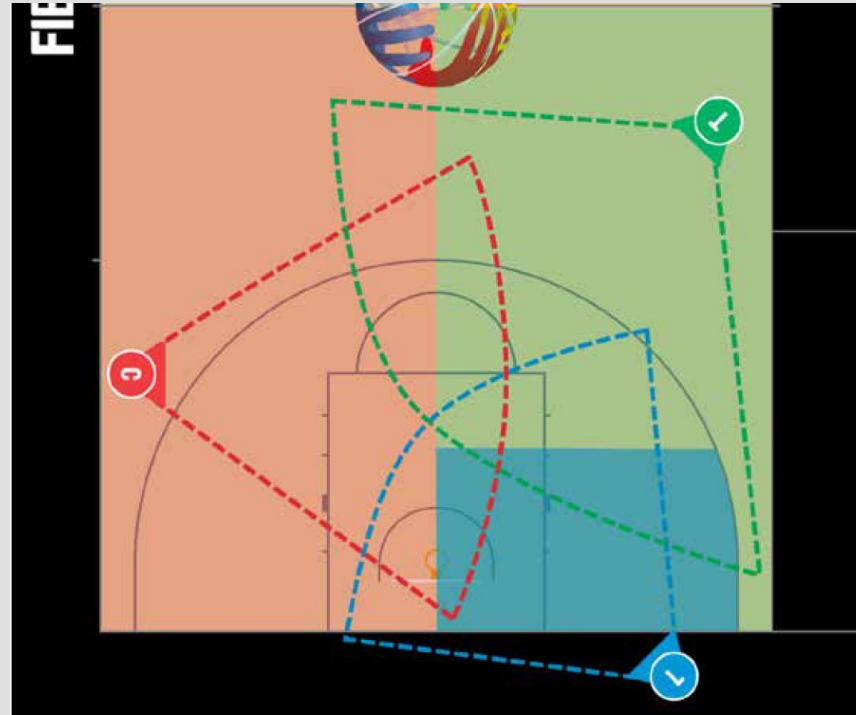
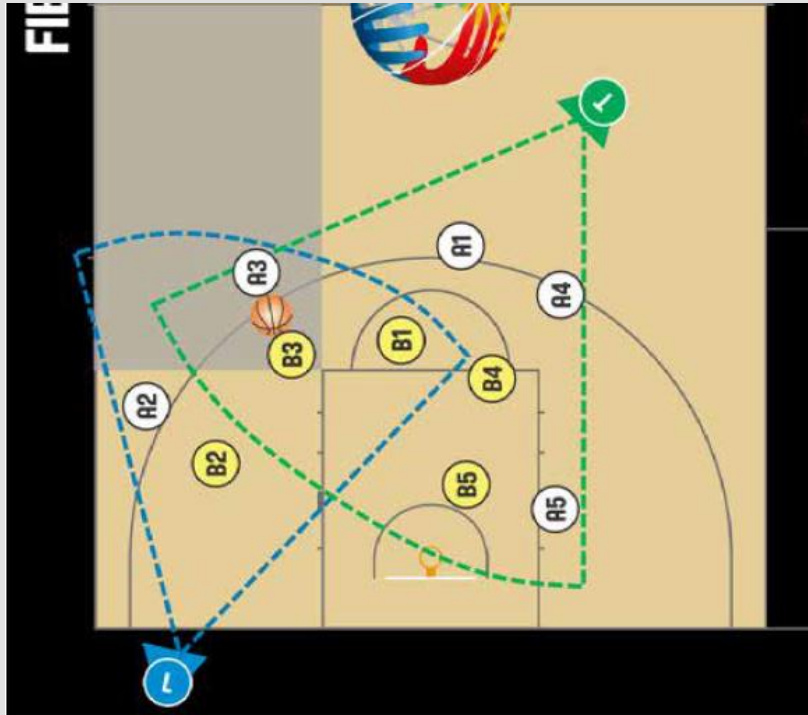


IS THIS BASIC COVERAGE?



AREA OF RESPONSIBILITY - AOR

PLAYERS ARE MOVING, DYNAMIC COVERAGE



**We are not refereeing a zone, we are refereeing players actions.
Who is able to see the entire play (film, not snapshot).**

PRIMARY COVERAGE - PCE

PRIMARY COVERAGE	AREA OF RESPONSIBILITY
General Liability	Bodily Injury Property Damage Personal & Advertising Injury
Commercial Auto	Bodily Injury Property Damage
Workers Compensation	Medical Expenses Disability Benefits Death Benefits
Professional Liability	Negligence Claims
Cyber Liability	Data Breach Network Security
Directors & Officers Liability	Mismanagement Breach of Fiduciary Duty
Umbrella Policy	Excess Coverage over all other policies



INTERCONTINENTAL CUP Singapore 2024 GLU 0 0 TAS 1st 9:43 18

PRIMARY DEFENDER

Which player should we focus on?



PRIMARY DEFENDER - PD



PRIMARY DEFENDER

PRIMARY COVERAGE

AREA OF RESPONSIBILITY

REFEREE THE DEFENCE



*The technique we use.
IOT*

REFEREE DEFENSE - RD

REFEREE DEFENSE

PRIMARY DEFENDER

PRIMARY COVERAGE

AREA OF RESPONSIBILITY

OPEN ANGLE

Is the referee able to see the point of contact - POC?



OPEN / CLOSED ANGLE – OA/CA

OPEN / CLOSED ANGLE

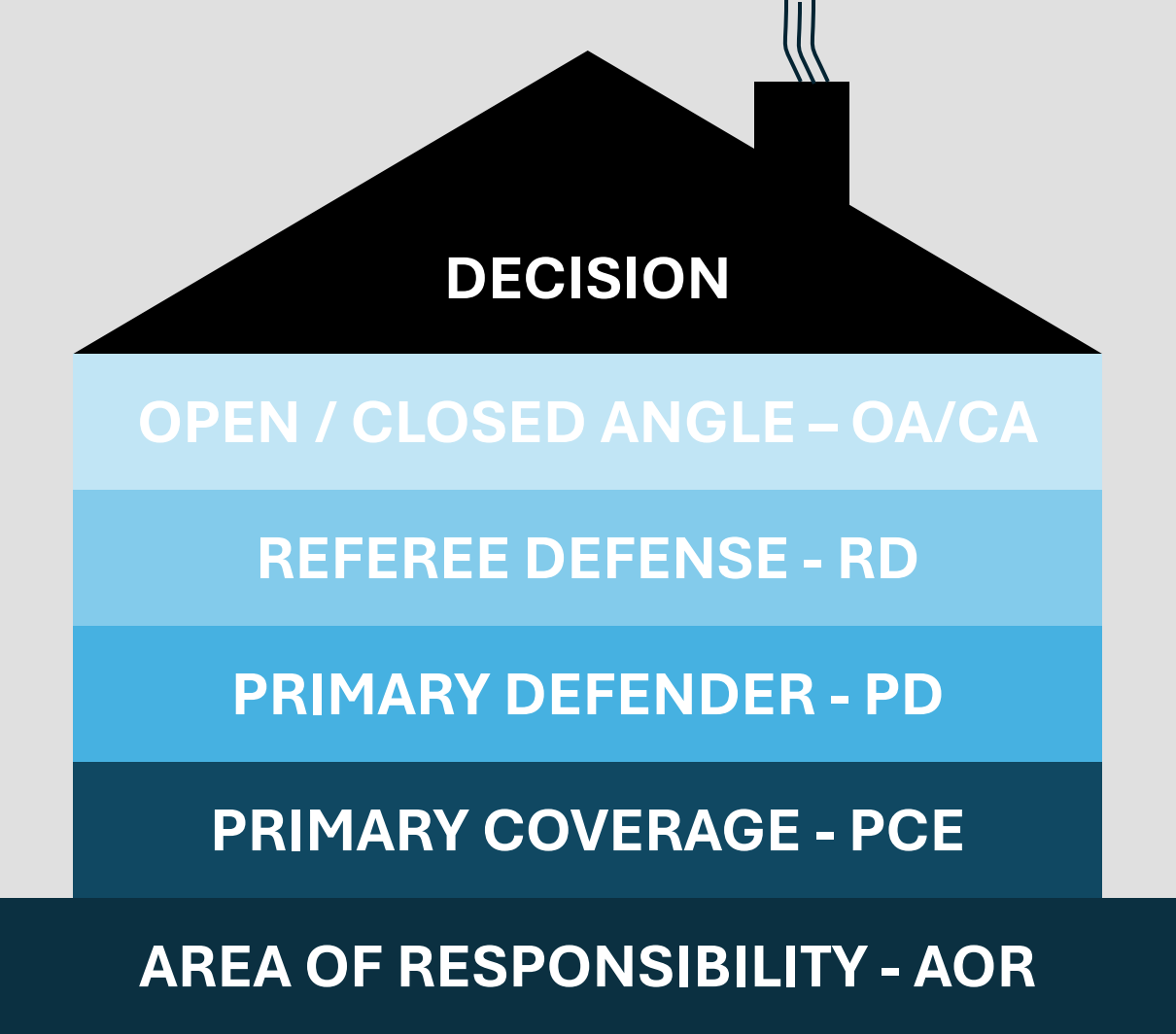
REFEREE DEFENSE

PRIMARY DEFENDER

PRIMARY COVERAGE

AREA OF RESPONSIBILITY

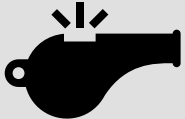
This process leads to a decision (call or no call)



Who builds the roof, when there is CA?



Referee with SCE



CW

PROCESSING THE PLAY - QUALITY DECISION

1. See – Gather all relevant information
2. Process – Organise all relevant information
3. Decide – Define the needed action



Diagram: See the whole play before making a decision

Goal: to prevent emotional calls/marginal calls

TIMING OF THE WHISTLE

Patience whistle

PW

Cadence whistle

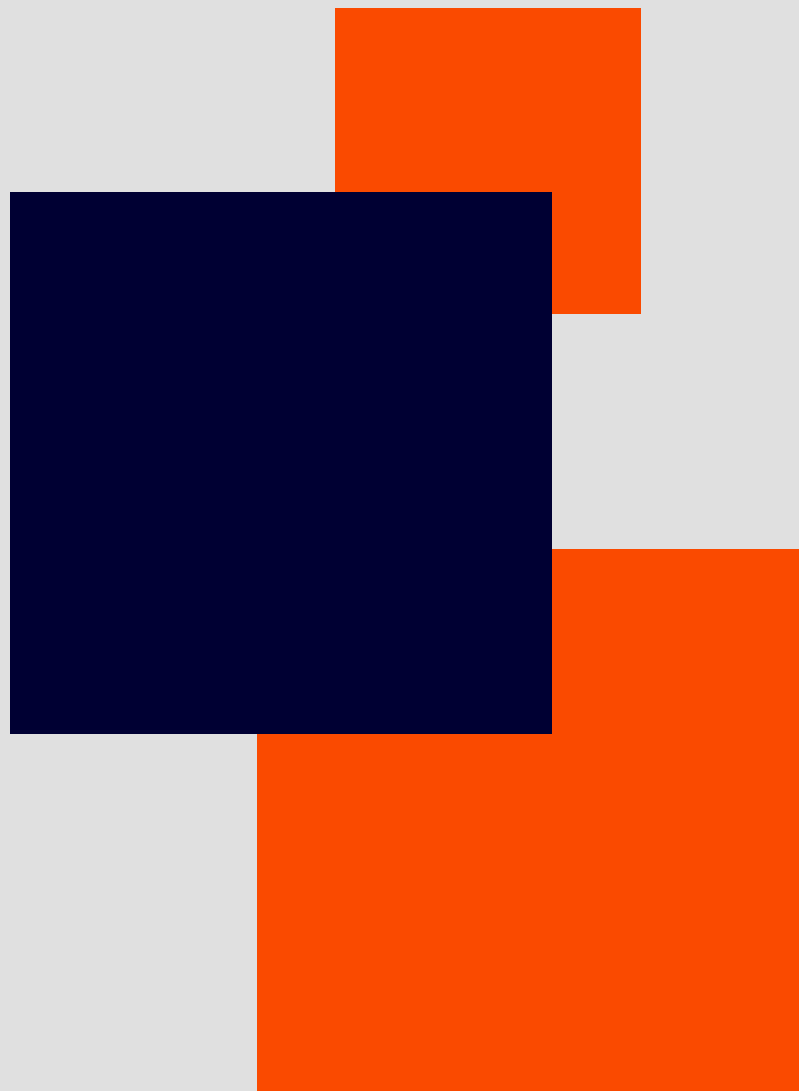
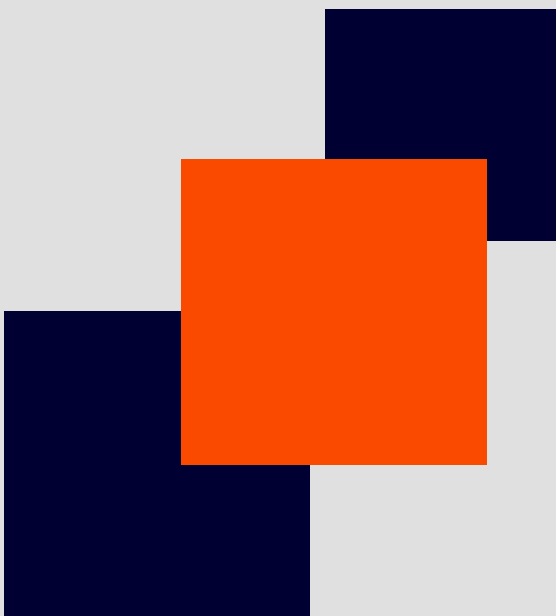
CW

Quick whistle

QW 

Immediate whistle

IW





BASKETBALL
NEDERLAND